

THE EISELE RESEARCH GROUP at CUNY's NEW SCIENCE CAMPUS

RESEARCH OPPORTUNITIES

FOR STUDENTS

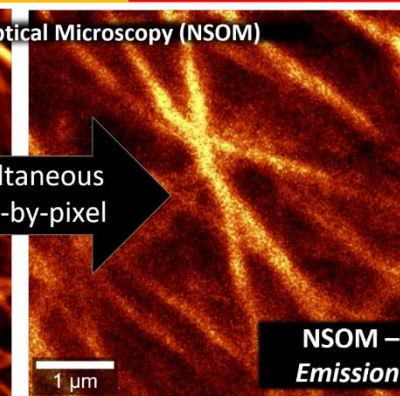
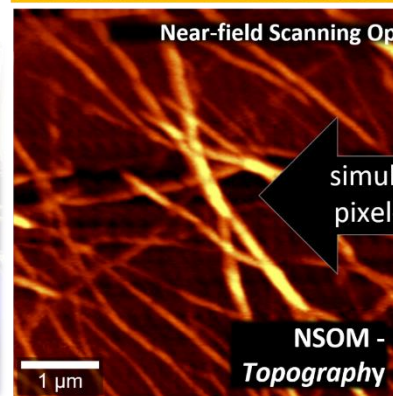
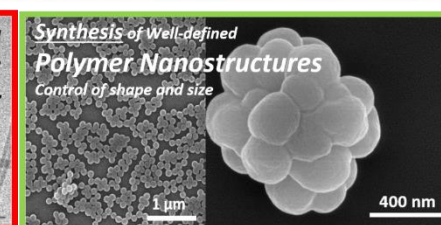
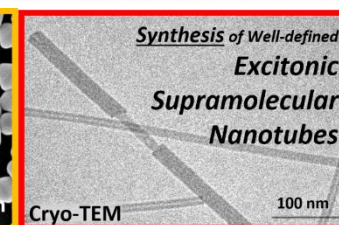
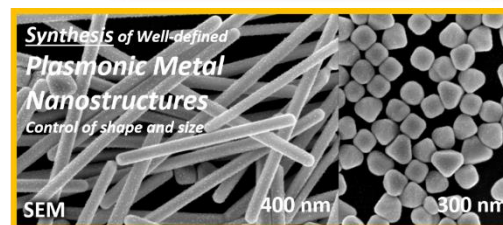
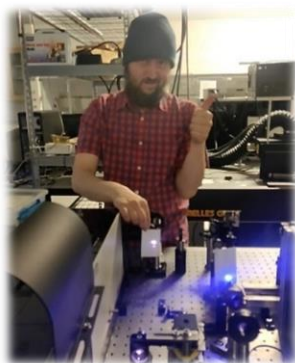
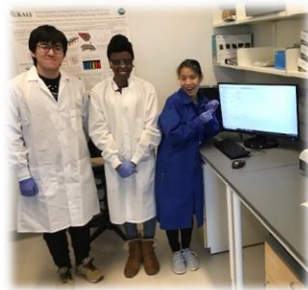
The Eisele Research Laboratories focus on fundamental research with a wide range of potential applications, from sustainable energy (e.g. solar energy harvesting) to health care (e.g. drug delivery for cancer treatment).

Highly motivated students

—majoring in Engineering, Chemistry, Physics, Materials or Computer Science— will receive a rigorous training and mentoring by joining one of the research teams:

- Ultrafast Time-resolved Spectroscopy Team,
- Super High-resolution Nanolmaging Team,
- Self-assembled Nanoparticles Synthesis Team,
- Bio-inspired Supramolecular Synthesis Team.

FOR MORE INFORMATION
WWW.EISELEGROUP.COM
Eisele@EiseleGroup.com



simultaneous pixel-by-pixel

