

THE EISELE RESEARCH GROUP at CUNY's NEW SCIENCE CAMPUS

RESEARCH OPPORTUNITIES

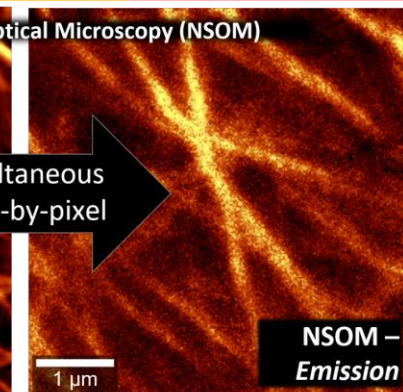
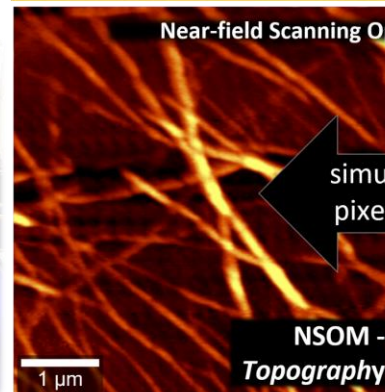
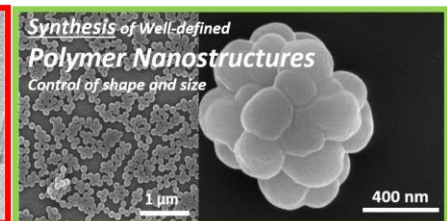
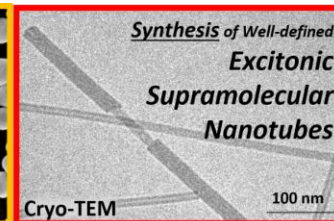
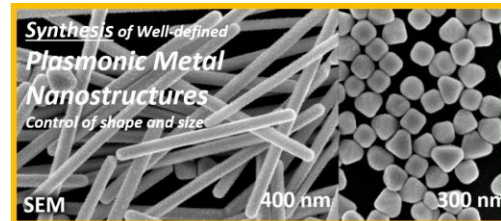
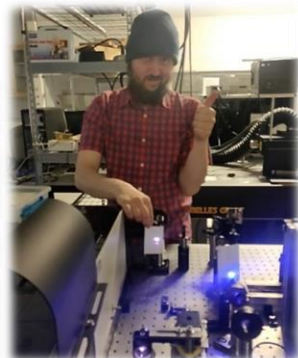
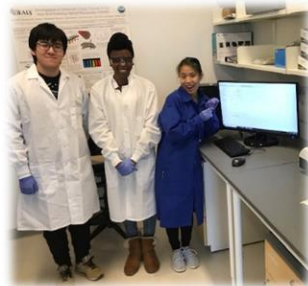
FOR MASTER & GRADUATE STUDENTS

The Eisele Research Laboratories focus on fundamental research with a wide range of potential applications, from sustainable energy (*e.g.* solar energy harvesting) to health care (*e.g.* drug delivery for cancer treatment).

Highly motivated master & graduate students –majoring in Engineering, Chemistry, Physics, Materials or Computer Science— will receive a rigorous training and mentoring by joining one of the research teams:

- Ultrafast Time-resolved Spectroscopy Team,
- Super High-resolution Nanolmaging Team,
- Self-assembled Nanoparticles Synthesis Team,
- Bio-inspired Supramolecular Synthesis Team.

FOR MORE INFORMATION
WWW.EISELEGROUP.COM
Eisele@EiseleGroup.com



simultaneous pixel-by-pixel

